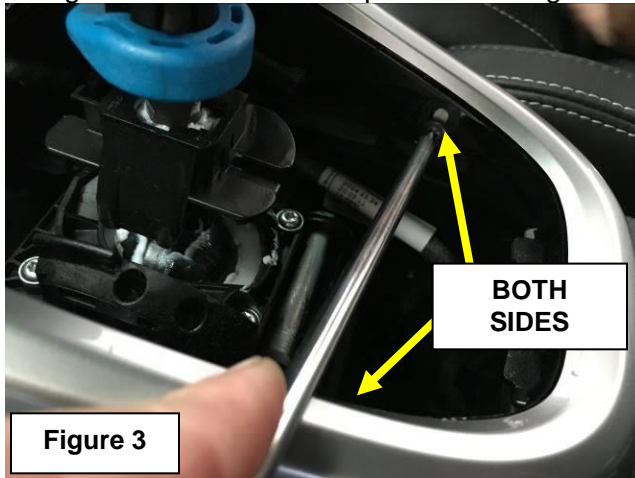


REMOVAL INSTRUCTIONS

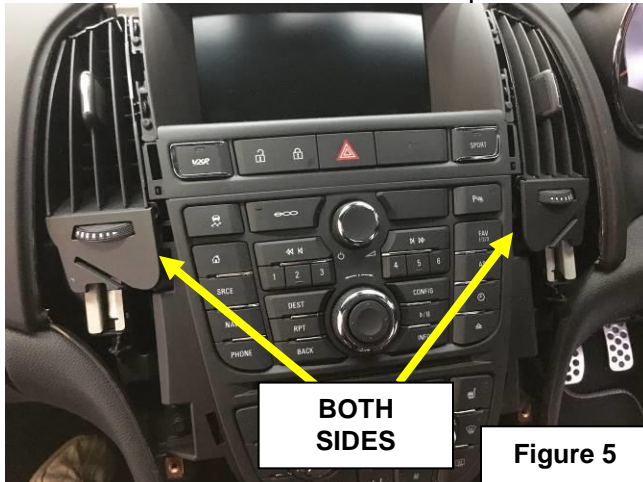
1. Remove rubber piece from under accessory and USB point. Using removal tool lift plastic piece and then lift gear shift surround. Refer Figure 1 & 2



2. With gear shift surround lifted locate the 2 screws either side of the center panel and remove both screws. After removing lift and remove surround entire surround. Gear shift surround can be guided through surround and left in place. Refer figure 3 and 4.



3. With stereo surround removed unclip both sides of vent assy to expose the bolts. Refer figure 5 & 6.



4. Remove the 4 x bolts at the below points (refer figure 7) and remove the climate/stereo control panel and remove the 3 x connectors at the rear. If the bottom won't unclip wrap the panel in a towel and let it sit to the side.



5. Once stereo is visible remove 2 x bolts and remove stereo from cavity.