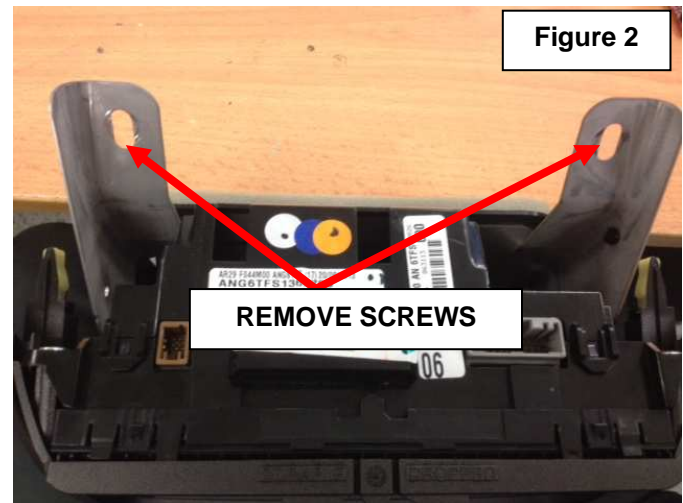
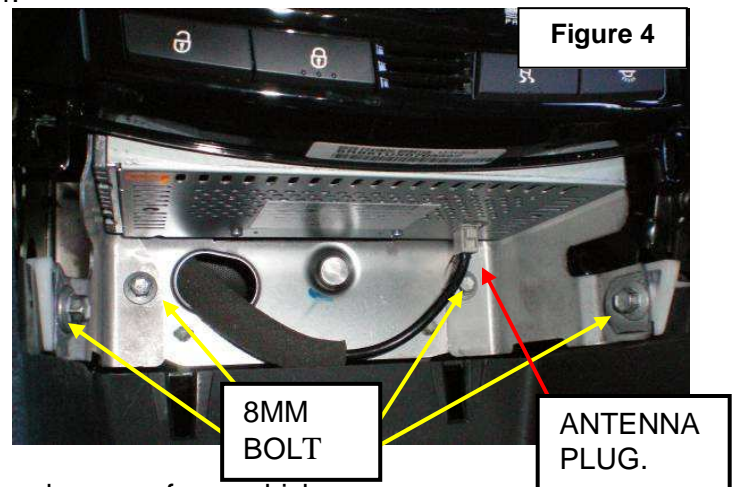


FG MKII ICC REMOVAL-AUDIO CONTROL MODULE

1. Remove top cover from above TFT screen. This can normally be achieved from pushing the front of the top cover up. Refer figure 1. Remove 2 screws holding ICC bracket to dash and remove the 2 plugs from the top of the screen. Refer figure 2.



2. Remove tissue box holder from under stereo by grasping and pulling towards rear of vehicle and remove 4 x 8mm bolts and Antenna plug. Refer figure 3 & 4.



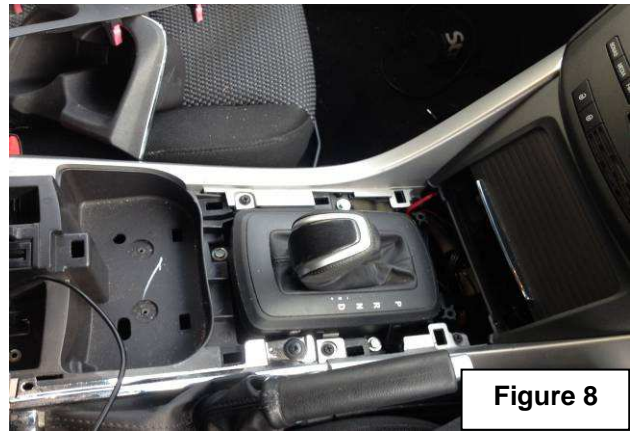
3. Grasp ICC and pull towards the rear of the vehicle and remove from vehicle.

TERRITORY SZ ICC REMOVAL

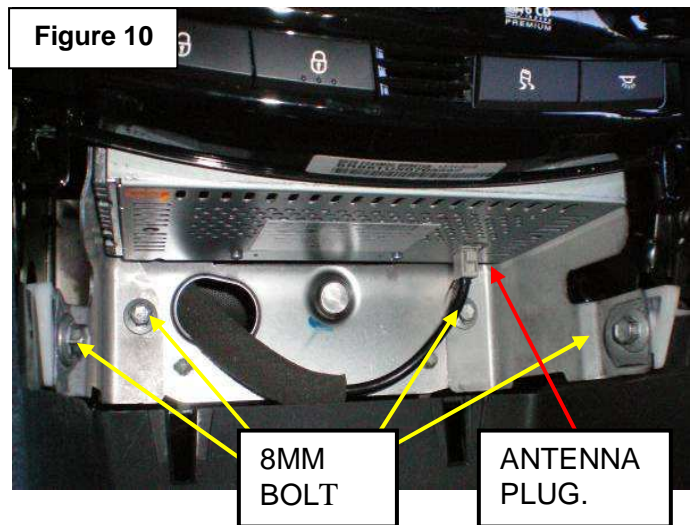
4. Remove top cover from above TFT screen. This can normally be achieved by grasping the vents at the rear of the cover and pulling up. Refer figure 5. Remove 2 screws holding ICC bracket to dash and remove the 2 plugs from the top of the screen. Refer figure 6



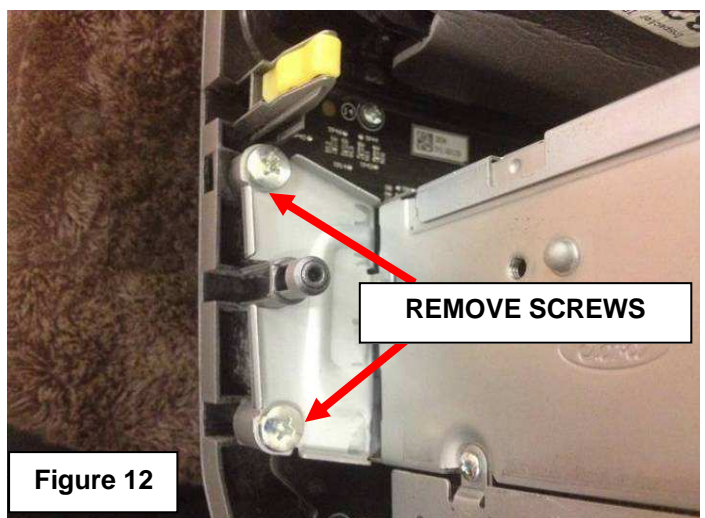
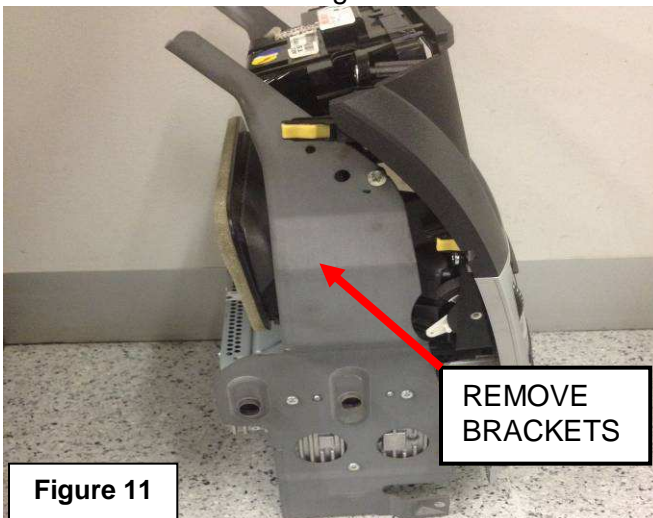
5. Remove the 2 rubber bases from the bottom of the drink holders and remove the screws and pull out the drink holder. Refer figure 7. Remove the surround from around the gear shifter. Refer figure 8.



6. Remove the centre storage compartment by grasping and pulling towards the rear of the vehicle. Refer figure 9.

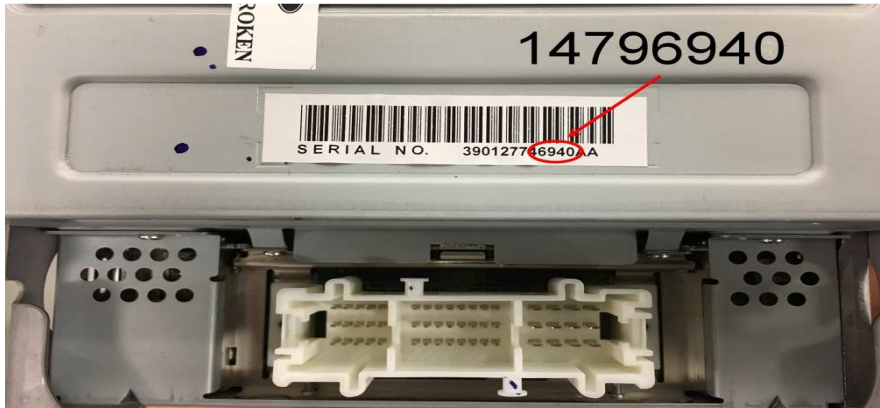


7. Remove 4 x 8mm bolts and Antenna plug. Refer figure 10.
8. Grasp ICC and pull towards the rear of the vehicle and remove from vehicle.
9. Remove both brackets from either side of the stereo. Refer figure 11.
10. Remove 4 screws holding the TFT screen to the facia.



11. Remove the 2 x screws from either side of the audio module holding it in place and remove the cable tie attached to the top of the chassis holding the cable in place.

HOW TO IDENTIFY YOUR ACM



NOTE BEFORE SENDING:

- PLEASE SUPPLY FULL NAME AND ADDRESS AND CONTACT DETAILS
- ONLY SEND THE AUDIO CONTROL MODULE - DO NOT SHIP THE COMPLETE ICC UNIT OTHERWISE EXTRA SHIPPING CHARGES WILL APPLY

PLEASE SEND FAULTY ACM TO:

**ATT: SERVICE
ASL AUTOMEDIA
13 COMMERCIAL DRIVE
LYNBROOK VICTORIA 3975**