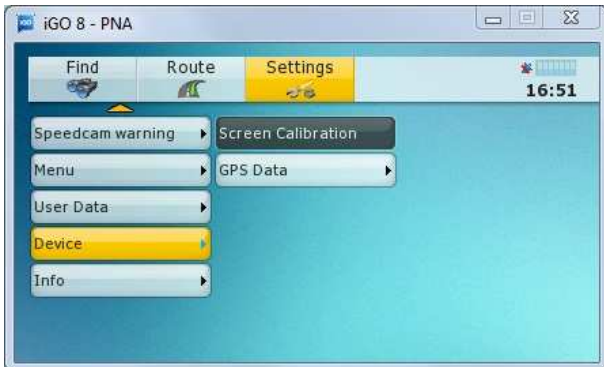


SCREEN CALIBRATION PROCEDURE FOR ASL SATNAV GEN 3

1. Locate the 'Screen Calibration' settings by Navigating through the following menu:
Settings\Device\Screen Calibration



2. Calibrate the screen by pressing the **UP/DOWN/LEFT/RIGHT** Buttons on remote until screen has been set into position correctly and press 'DONE' button.
3. You can return to the Map by pressing the 'MENU' button on the remote to ensure screen is calibrated correctly.
4. Locate Navigation module and while Navigation is still 'ON' locate the 'hole' on the side of the box and with a small screwdriver or pen press the button located inside to 'Soft Reset' the unit. Switch **ACC** off and wait '20 seconds' before turning **ACC** back on.



5. Screen is now calibrated correctly and 'Screen Calibration' settings will be saved. If the screen requires further calibration the above steps can be repeated.